

# Wholesale FlexWave

Factsheet

**Vodafone**  
Power to you



## Vodafone Wholesale FlexWave

The increasing availability of next generation fixed and mobile networks supporting superfast broadband speeds coupled with the proliferation of Internet enabled devices and new bandwidth-hungry applications is resulting in huge increases in network traffic volumes.

Vodafone Wholesale FlexWave provides an ideal solution for Carriers, Internet Service Providers and Systems Integrators needing to scale up their networks with high capacity linking to cater for this explosion in data traffic.

### FlexWave Overview

One of the data products in the Vodafone Wholesale portfolio FlexWave is a high capacity digital data transport service.

FlexWave circuits enable point to point linking of site equipment within and between New Zealand cities.

FlexWave is based on Wave Division Multiplexing (WDM) technologies and uses optical Transponder/Muxponder network elements to convert the client signals being presented into a form suitable for transmission on the fibre line in an assigned optical channel band.

The service delivers fully managed, full duplex, exclusive use transmission capacity at speeds up to 100Gbit/s with a flexible choice of standards based interfaces including:

- Gigabit Ethernet (1GE /10GE/ 40GE/ 100GE)
- Traditional SDH (STM-16 (2.5G) and STM-64 (10G))
- Optical Transport Network (OTU1 -2.66G/OTU2-11.09G/OTU3-44.58G/OTU4-112G)
- Fibre Channel/FICON (1G/2G/4G)

The service is provisioned on Vodafones own highly reliable and secure fibre cable and re-configurable optical add drop multiplexer (ROADM) based optical transport infrastructure.

Customers are able to choose between unprotected or protected service topologies to match their network resilience requirements.

Vodafone FlexWave is currently available for linking between 22 of the largest New Zealand cities and within the CBD and Metro areas of selected cities (including Auckland, Wellington and Christchurch)

### Using FlexWave Services

FlexWave is ideal for Carriers, Service Providers or Systems Integrators and can be used in a range of high capacity networking applications including:

- Augmenting inter-nodal trunking capacity between existing network operator platforms or enabling extension of operator backbone network reach where they don't currently have their own facilities.
- Fixed backhaul linking from Ultra Fast Broadband (UFB) network Points of Interconnect, Mobile Network sites and International Submarine Cable Stations.
- Data Centre interconnection
- Storage Area Networking and Disaster Recovery transmission links

## FlexWave Business Benefits

- By entrusting your network linking to us you can have peace of mind knowing you are dealing with **one of the largest Tier 1 Telecommunications providers in New Zealand** and a proven supplier of data networking products for over 20 years.
- With our scale and **extensive New Zealand coverage** we can provide cost effective backhaul services that permit you to quickly expand your network footprint and potential market without major capital expenditure and without the operational overhead of dealing with multiple suppliers.
- Next generation Carrier Grade transmission equipment coupled with multiple diverse paths on our wholly owned core fibre network means you benefit from **high performance, highest availability and low latency circuits**.
- FlexWave provides **dedicated capacity** with highly deterministic performance characteristics, giving you the flexibility to determine how to most efficiently utilise the purchased bandwidth.
- A **choice of standards based client interface types** increases the number of applications the service can be used for and ensures maximum interoperability with vendor CPE and other service provider's network services.
- Vodafone's experienced team of solutions specialists have a **high level of technical expertise** and will work with you to identify an optimal FlexWave solution for your business needs.
- Our 24 x 7 Network Operations Centre carries out monitoring of optical transport platforms allowing **rapid detection of service degradation or interruptions** to ensure maximum service availability and provide a superior customer experience.

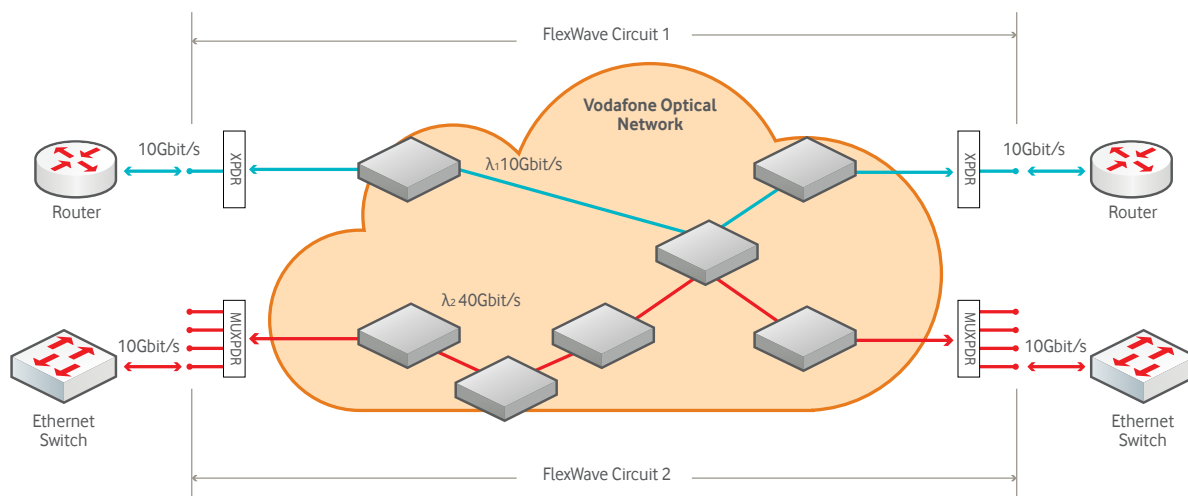


Figure 1  
FlexWave Transponder and Muxponder based circuits

### For more information

To find out more, contact your Vodafone Wholesale account manager or visit [www.wholesale.vodafone.co.nz/](http://www.wholesale.vodafone.co.nz/)